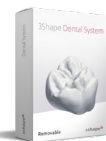
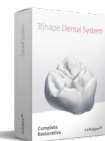
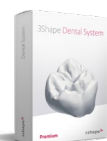


Appendix II: Dental System version 2021 Software Indications



| Indications | Crown & Bridge | Premium | Complete Restorative | Removables |
|--|----------------------|---------------------|----------------------|---------------------|
| Copings and bridge frameworks | ✓ | ✓ | ✓ | Upgrade |
| Anatomical copings and bridge framework | ✓ | ✓ | ✓ | Upgrade |
| Full anatomical crowns and bridges | ✓ | ✓ | ✓ | Upgrade |
| Single wax up / Wax up bridge | ✓ | ✓ | ✓ | Upgrade |
| Inlay / Onlay / Inlay bridge / Veneers | ✓ | ✓ | ✓ | Upgrade |
| Attachments | ✓ | ✓ | ✓ | ✓ |
| Tabletops and Non-prepared Veneers | Upgrade / CAD Points | ✓ | ✓ | Upgrade |
| Multi-layer crowns and bridges | Upgrade / CAD Points | ✓ | ✓ | Upgrade |
| Digital temporaries | Upgrade / CAD Points | ✓ | ✓ | Upgrade |
| Virtual diagnostic wax-ups | Upgrade / CAD Points | ✓ | ✓ | Upgrade |
| Post & core | Upgrade / CAD Points | ✓ | ✓ | Upgrade |
| Telescopes | Upgrade / CAD Points | ✓ | ✓ | Upgrade |
| Gingiva on all indications | Upgrade / CAD Points | ✓ | ✓ | Upgrade |
| Positioning Guides | Upgrade / CAD Points | ✓ | ✓ | Upgrade |
| Customized impression trays for implant | Upgrade / CAD Points | ✓ | ✓ | ✓ |
| Customized abutments and screw-retained crowns | Add-on / CAD Points | Add-on / CAD Points | ✓ | Add-on / CAD Points |
| Implant Bars and Bridges | Add-on / CAD Points | Add-on / CAD Points | ✓ | Add-on / CAD Points |
| Full Dentures | Add-on / CAD Points | Add-on / CAD Points | ✓ | ✓ |
| Removable partial dentures | Add-on / CAD Points | Add-on / CAD Points | ✓ | ✓ |
| Copy Dentures | Upgrade / CAD Points | Add-on / CAD Points | ✓ | ✓ |
| Customized impression trays for dentures | Upgrade / CAD Points | ✓ | ✓ | ✓ |
| Digital Models | Add-on / CAD Points | Add-on / CAD Points | ✓ | Add-on / CAD Points |
| Smile Design – 2D design of smiles | Add-on / Upgrade | ✓ | ✓ | Add-on / Upgrade |
| Splint Design, night guards and mouthguards | Add-on / Upgrade | ✓ | ✓ | Add-on / Upgrade |
| IvoSmile* | Add-on / Upgrade | Add-on / Upgrade | ✓ | Add-on / Upgrade |
| Orthodontics / Orthodontic appliances | Add-on | Add-on | Add-on | Add-on |
| Implant Planning and Surgical Guides (see page 37) | Add-on | Add-on | Add-on | Add-on |

✓
Upgrade / CAD Points
Add-on / CAD Points
Upgrade

Included
Upgrade to Premium or Complete Restorative or apply CAD Points . Page 6, 7 and 21.
Purchase add-on module or apply CAD Points. Page 6 and 7.
Requires upgrade to Premium or Complete Restorative. Page 21.

* Restricted in certain countries – check with 3Shape sales for availability

Dental System version 2021 Software Features



| Features | Crown and Bridge | Premium | Complete Restorative | Removables |
|--|------------------|---------|----------------------|------------|
| Smile Composer including Sculpt Toolkit | ✓ | ✓ | ✓ | ✓ |
| Mirroring teeth | ✓ | ✓ | ✓ | ✓ |
| Simultaneous modeling on upper & lower | ✓ | ✓ | ✓ | ✓ |
| Dynamic virtual articulation | ✓ | ✓ | ✓ | ✓ |
| RealView Engine with 2D Design guidelines | Upgrade | ✓ | ✓ | ✓ |
| Align and re-use design | ✓ | ✓ | ✓ | ✓ |
| CAD block placement | ✓ | ✓ | ✓ | ✓ |
| 3Shape Communicate® Inbox and shade | ✓ | ✓ | ✓ | ✓ |
| Measurement | ✓ | ✓ | ✓ | ✓ |
| Basic / Expert mode | ✓ | ✓ | ✓ | ✓ |
| Advanced design validation tools | ✓ | ✓ | ✓ | ✓ |
| Dental Manager Inbox | ✓ | ✓ | ✓ | ✓ |
| Full manufacturing equipment compatibility | ✓ | ✓ | ✓ | ✓ |
| STL and PLY Import | ✓ | ✓ | ✓ | ✓ |
| Scan STL and PLY Export* | ✓ | ✓ | ✓ | ✓ |

✓ Included
 Upgrade / CAD Points Upgrade to Premium or Complete Restorative or apply CAD Points . Page 6, 7 and 21.
 Add-on / CAD Points Purchase add-on module or apply CAD Points. Page 6 and 7.
 Upgrade Requires upgrade to Premium or Complete Restorative. Page 21.

* PLY Export option is available from Dental System 2021 and onwards