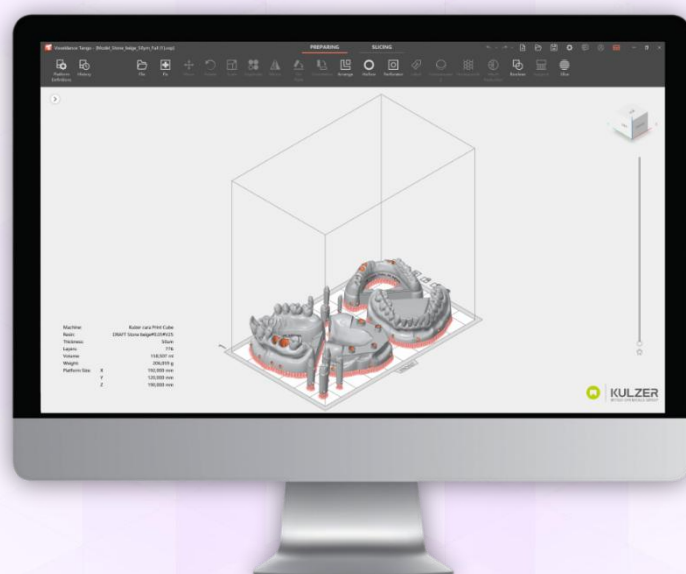


# CARA PRINT COCKPIT

## RELEASE NOTES



Version: 02  
Date: 22.04.2025



[www.kulzer.com/  
mycube-support](http://www.kulzer.com/mycube-support)



**KULZER**  
MITSUBI CHEMICALS GROUP

## General Information

The installer for cara Print Cockpit from Kulzer always contains the latest version of cara Print Cockpit AND the latest version of the Tango slicer.

Below, please see a historic list of cara Print Cockpit versions including the release date.

cara Print Cockpit version	Release date
V1.0.03	2024-11-15
V1.0.04	2025-01-31
V1.0.05*	2025-04-22

Below, please see a historic list of Tango versions including the release date.

Tango version	Release date
4.0.23.23	2024-11-15
4.0.33.1	2025-01-31
4.0.35.12*	2025-04-22

\*latest version

## Revision History

### cara Print Cockpit

cara Print Cockpit V1.0.04	
1	Check box added in the installation process to make it possible to install the software for all users on the same computer.
2	Information added to “restart the software” after having changed the language
3	Calculation and display of the expected printing time per print job
4	Sign added: Trusted installer with signature
5	Improved translations for all available languages
6	Left click on the Kulzer logo will lead to Kulzer’s support hub.

cara Print Cockpit V1.0.05*	
1	“User defined Print Parameters” function added

## Tango

Tango 4.0.33.1	
1	Portuguese and Italian translations available
2	Updated German translations
3	Auto save function for the Tango project (.vxp) possible. The program will auto save the project to a user-defined path when exporting the slicing file.  Kulzer recommends to always have this function activated, as this can help the user and Kulzer's support team, if necessary

Tango 4.0.35.12*	
1	Japanese language translation added
2	German translation improved

## Print parameters update

After having successfully updated your cara Print Cockpit software to version V1.0.05, please make sure to also update the print parameters right away! This will give you access to the complete offer of dima Print materials print parameters, including the newly added print parameters for **dima Print Guide & Tray**, **dima Print Gingiva Mask** and **dima Print Denture Base 2**.

New print parameters for newly added dima Print materials can be imported using the "Print Parameter Update" function. Check for updates using the following button in your cara Print Cockpit software and consult the cara Print Cockpit User Guide for more information.

**Check Update**